



# Head Selection & Tip Ordering Guide

Locate your Apricot Designs PP model in the list below and then proceed to the head & tip selection guide for your pipettor.

If you have any questions about which head or tips to use for your Apricot pipettor, please contact us at:

626-966-3299 or [info@apricotdesigns.com](mailto:info@apricotdesigns.com).

## Personal Pipettor (PP) Models

PP-96H-M  
PP-96H-H

96-channel 550 ul  
maximum volume  
versions

**Page 2**

PP-96L-M

96-channel 125 ul  
maximum volume  
versions

**Page 7**

PP-384-M

384-channel 125 ul  
maximum volume  
versions

**Page 10**

**096-A-01-EZL-SL-550**

**96**    **DISPOSABLE**

- Recommended for volume range 2-550 ul
- EZ-Load Head - no tools required
- Pipette to 96 labware
- Pipette to 384 labware; the PP will automatically index the head to 4 quadrants

**Recommended tips for 5 - 550 ul volumes**

Product Number	Description	Max Vol	Tips / Rack	Racks / Case
550-096-EZ-NS	Non-Sterile	550 ul	96	40
550-096-EZ-S	Sterile	550 ul	96	40
550-096-EZ-FS	Sterile, Filter Tip	400 ul	96	40

**Recommended tips for 2 - 250 ul volumes**

Product Number	Description	Max Vol	Tips / Rack	Racks / Case
250-096-EZ-NS	Non-Sterile	250 ul	96	40
250-096-EZ-S	Sterile	250 ul	96	40
250-096-EZ-FS	Sterile, Filter Tip	(pending)	96	40

**096-A-01-EZL-SL**

**96**    **DISPOSABLE**

- Recommended for volume range 2-125 ul
- The high-volume pipettor may give acceptable results below 2 ul; a low-volume pipettor model is recommended for best performance at < 2ul.
- EZ-Load Head - no tools required
- Pipette to 96 labware
- Pipette to 384 labware using the iP Indexer 384 supplied with 96 channel i-Pipette models
- **CAUTION: The maximum volume of this tip is much lower than the pipettor plunger capacity. When using this head, the method must be set up correctly to prevent aspiration of liquid beyond the maximum volume of the tip in order to prevent undesired flooding of the pipettor mechanism.**

**Recommended tips for 2 - 125 ul volumes**

Product Number	Description	Max Vol	Tips / Rack	Racks / Case
125-096-EZ-NS	Non-Sterile	125 ul	96	40
125-096-EZ-S	Sterile	125 ul	96	40

**Recommended tips for 2 - 50 ul volumes**

Product Number	Description	Max Vol	Tips / Rack	Racks / Case
050-096-EZ-NS	Non-Sterile	50 ul	96	40
050-096-EZ-S	Sterile	50 ul	96	40

**Recommended tips for 2 - 15 ul volumes**

Product Number	Description	Max Vol	Tips / Rack	Racks / Case
015-096-EZ-NS	Non-Sterile	15 ul	96	40
015-096-EZ-S	Sterile	15 ul	96	40

## 096-A-01-EZL-550-SC



**8** **DISPOSABLE** **SERIAL DILUTION**

- **Recommended for volume range 2-550 ul**
- EZ-Load Head - no tools required
- Serial Dilution by COLUMN
- Pipette to 96 labware
- The PP will automatically perform the serial dilution operation using the programmed method

### Recommended tips for 5 - 550 ul volumes

Product Number	Description	Max Vol	Tips / Strip	Strips / Rack	Racks / Case
550-008-EZ-NS	Non-Sterile	550 ul	8	12	40
550-008-EZ-S	Sterile	550 ul	8	12	40
550-008-EZ-FS	Sterile, Filter Tip	400 ul	8	12	40

### Recommended tips for 2 - 250 ul volumes

Product Number	Description	Max Vol	Tips / Strip	Strips / Rack	Racks / Case
250-008-EZ-NS	Non-Sterile	250 ul	8	12	40
250-008-EZ-S	Sterile	250 ul	8	12	40
250-008-EZ-FS	Sterile, Filter Tip	(pending)	8	12	40

## 096-A-01-EZL-550-SR



**12** **DISPOSABLE** **SERIAL DILUTION**

- **Recommended for volume range 2-550 ul**
- EZ-Load Head - no tools required
- Serial Dilution by ROW
- Pipette to 96 labware
- The PP will automatically perform the serial dilution operation using the programmed method

### Recommended tips for 5 - 550 ul volumes

Product Number	Description	Max Vol	Tips / Strip	Strips / Rack	Racks / Case
550-012-EZ-NS	Non-Sterile	550 ul	12	8	40
550-012-EZ-S	Sterile	550 ul	12	8	40
550-012-EZ-FS	Sterile, Filter Tip	400 ul	12	8	40

### Recommended tips for 2- 250 ul volumes

Product Number	Description	Max Vol	Tips / Strip	Strips / Rack	Racks / Case
250-012-EZ-NS	Non-Sterile	250 ul	12	8	40
250-012-EZ-S	Sterile	250 ul	12	8	40
250-012-EZ-FS	Sterile, Filter Tip	(pending)	12	8	40

## 096-A-01-EZL-SC



**8** **DISPOSABLE** **SERIAL DILUTION**

### Recommended tips for 2 - 125 ul volumes

Product Number	Description	Max Vol	Tips / Strip	Strips / Rack	Racks / Case
125-008-EZ-NS	Non-Sterile	125 ul	8	12	20
125-008-EZ-S	Sterile	125 ul	8	12	20

### Recommended tips for 2 - 50 ul volumes

Product Number	Description	Max Vol	Tips / Strip	Strips / Rack	Racks / Case
050-008-EZ-NS	Non-Sterile	50 ul	8	12	20
050-008-EZ-S	Sterile	50 ul	8	12	20

- Recommended for volume range 2-125 ul
- The high-volume pipettor may give acceptable results below 2 ul; a low-volume pipettor model is recommended for best performance at < 2ul.
- EZ-Load Head - no tools required
- Serial Dilution by COLUMN
- Pipette to 96 labware
- The PP will automatically perform the serial dilution operation using the programmed method
- **CAUTION: The maximum volume of this tip is much lower than the pipettor plunger capacity. When using this head, the method must be set up correctly to prevent aspiration of liquid beyond the maximum volume of the tip in order to prevent undesired flooding of the pipettor mechanism.**

### Recommended tips for 2 - 25 ul volumes

Product Number	Description	Max Vol	Tips / Strip	Strips / Rack	Racks / Case
015-008-EZ-NS	Non-Sterile	15 ul	8	12	20
015-008-EZ-S	Sterile	15 ul	8	12	20

## 096-A-01-EZL-SR



**12** **DISPOSABLE** **SERIAL DILUTION**

### Recommended tips for 2 - 125 ul volumes

Product Number	Description	Max Vol	Tips / Strip	Strips / Rack	Racks / Case
125-012-EZ-NS	Non-Sterile	125 ul	12	8	20
125-012-EZ-S	Sterile	125 ul	12	8	20

### Recommended tips for 2 - 50 ul volumes

Product Number	Description	Max Vol	Tips / Strip	Strips / Rack	Racks / Case
050-012-EZ-NS	Non-Sterile	50 ul	12	8	20
050-012-EZ-S	Sterile	50 ul	12	8	20

- Recommended for volume range 2-125 ul
- The high-volume pipettor may give acceptable results below 2 ul; a low-volume pipettor model is recommended for best performance at < 2ul.
- EZ-Load Head - no tools required
- Serial Dilution by ROW
- Pipette to 96 labware
- The PP will automatically perform the serial dilution operation using the programmed method
- **CAUTION: The maximum volume of this tip is much lower than the pipettor plunger capacity. When using this head, the method must be set up correctly to prevent aspiration of liquid beyond the maximum volume of the tip in order to prevent undesired flooding of the pipettor mechanism.**

### Recommended tips for 2 - 15 ul volumes

Product Number	Description	Max Vol	Tips / Strip	Strips / Rack	Racks / Case
015-012-EZ-NS	Non-Sterile	15 ul	12	8	20
015-012-EZ-S	Sterile	15 ul	12	8	20

PP 96 channel High Volume Pipettors (550)

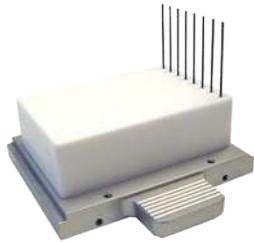
## 096-A-02T



96 FIXED

- Recommended for volume range 5-550 ul
- Maximum volume 550 ul
- Requires Wash Manifold 550-A-10N & Tubing Set 550-A-18
- Pipette to 96 labware
- Pipette to 384 labware; the PP will automatically index the head to 4 quadrants

## 096-A-02T-SC-M



8 FIXED SERIAL DILUTION

- Recommended for volume range 5-550 ul
- Maximum volume 550 ul
- Requires Wash Manifold 550-A-10-SC
- Serial Dilution by COLUMN
- Pipette to 96 labware
- The PP will automatically perform the serial dilution operation using the programmed method

## 096-A-02T-SR



- Recommended for volume range 5-550 ul
- Maximum volume 550 ul
- Requires Wash Manifold 550-A-10-SR
- Serial Dilution by COLUMN
- Pipette to 96 labware
- The PP will automatically perform the serial dilution operation using the programmed method

**096-A-01-EZL-SL-550**



24
DISPOSABLE

- **Special Head for Corning HTS Transwell Plates**
- **Recommended for volume range 2-500 ul**
- EZ-Load Head - combined with Tip Collar and Adaptor Plate
- User loads 24 tips manually into Tip Collar

**Recommended tips for 5 - 500 ul volumes**

Product Number	Description	Max Vol	Tips / Rack	Racks / Case
550-096-EZ-NS	Non-Sterile	550 ul	96	40
550-096-EZ-S	Sterile	550 ul	96	40
550-096-EZ-FS	Sterile, Filter Tip	400 ul	96	40

**Recommended tips for 2 - 250 ul volumes**

Product Number	Description	Max Vol	Tips / Rack	Racks / Case
250-096-EZ-NS	Non-Sterile	250 ul	96	40
250-096-EZ-S	Sterile	250 ul	96	40
250-096-EZ-FS	Sterile, Filter Tip	(pending)	96	40

PP 96 channel Low Volume Pipettors (125)

**096-A-01-EZL-SL**

**96**    **DISPOSABLE**

- **Recommended for volume range 0.5-125 ul**
- EZ-Load Head - no tools required
- Pipette to 96 labware
- Pipette to 384 labware; the PP will automatically index the head to 4 quadrants
- When pipetting 1 ul and below the pipetting method will be the key factor for best precision, please contact Apricot Designs if advice is needed

**Recommended tips for 1 - 125 ul volumes**

Product Number	Description	Max Vol	Tips / Rack	Racks / Case
125-096-EZ-NS	Non-Sterile	125 ul	96	40
125-096-EZ-S	Sterile	125 ul	96	40

**Recommended tips for 0.5 - 15 ul volumes**

Product Number	Description	Max Vol	Tips / Rack	Racks / Case
015-096-EZ-NS	Non-Sterile	15 ul	96	40
015-096-EZ-S	Sterile	15 ul	96	40

**Recommended tips for 0.5 - 50 ul volumes**

Product Number	Description	Max Vol	Tips / Rack	Racks / Case
050-096-EZ-NS	Non-Sterile	50 ul	96	40
050-096-EZ-S	Sterile	50 ul	96	40

**096-A-01-EZL-SC**

**8**    **DISPOSABLE**    **SERIAL DILUTION**

- **Recommended for volume range 0.5-125 ul**
- EZ-Load Head - no tools required
- Serial Dilution by COLUMN
- Pipette to 96 labware
- The PP will automatically perform the serial dilution operation using the programmed method

**Recommended tips for 1 - 125 ul volumes**

Product Number	Description	Max Vol	Tips / Strip	Strips / Rack	Racks / Case
125-008-EZ-NS	Non-Sterile	125 ul	8	12	20
125-008-EZ-S	Sterile	125 ul	8	12	20

**Recommended tips for 0.5 - 25 ul volumes**

Product Number	Description	Max Vol	Tips / Strip	Strips / Rack	Racks / Case
015-008-EZ-NS	Non-Sterile	15 ul	8	12	20
015-008-EZ-S	Sterile	15 ul	8	12	20

**Recommended tips for 0.5 - 50 ul volumes**

Product Number	Description	Max Vol	Tips / Strip	Strips / Rack	Racks / Case
050-008-EZ-NS	Non-Sterile	50 ul	8	12	20
050-008-EZ-S	Sterile	50 ul	8	12	20

## 096-A-01-EZL-SR



12 DISPOSABLE SERIAL DILUTION

- Recommended for volume range 0.5-125 ul
- EZ-Load Head - no tools required
- Serial Dilution by ROW
- Pipette to 96 labware
- The PP will automatically perform the serial dilution operation using the programmed method

### Recommended tips for 1 - 125 ul volumes

Product Number	Description	Max Vol	Tips / Strip	Strips / Rack	Racks / Case
125-012-EZ-NS	Non-Sterile	125 ul	12	8	20
125-012-EZ-S	Sterile	125 ul	12	8	20

### Recommended tips for 0.5 - 15 ul volumes

Product Number	Description	Max Vol	Tips / Strip	Strips / Rack	Racks / Case
015-012-EZ-NS	Non-Sterile	15 ul	12	8	20
015-012-EZ-S	Sterile	15 ul	12	8	20

### Recommended tips for 0.5 - 50 ul volumes

Product Number	Description	Max Vol	Tips / Strip	Strips / Rack	Racks / Case
050-012-EZ-NS	Non-Sterile	50 ul	12	8	20
050-012-EZ-S	Sterile	50 ul	12	8	20

## 096-A-02T-125



96 FIXED

- Recommended for volume range 1-125 ul
- Maximum volume 125 ul
- Requires Wash Manifold 550-A-10N & Tubing Set 550-A-18
- Pipette to 96 labware
- Pipette to 384 labware; the PP will automatically index the head to 4 quadrants

## 096-A-02T-25

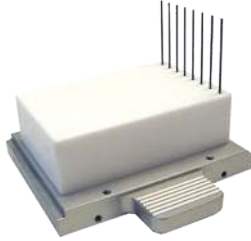


96 FIXED

- Recommended for volume range 0.5-25 ul
- Maximum volume 25 ul
- Requires Wash Manifold 550-A-10N & Tubing Set 550-A-18
- Pipette to 96 labware
- Pipette to 384 labware; the PP will automatically index the head to 4 quadrants
- When pipetting 1 ul and below the pipetting method will be the key factor for best precision, please contact Apricot Designs if advice is needed



PP 96 channel Low Volume Pipettors (125)

**096-A-02T-125-SC-M**

8

FIXED

SERIAL DILUTION

- Recommended for volume range 1-125 ul
- Maximum volume 125 ul
- Requires Wash Manifold 550-A-10-SC
- Serial Dilution by COLUMN
- Pipette to 96 labware
- The PP will automatically perform the serial dilution operation using the programmed method

**096-A-02T-125-SR**

12

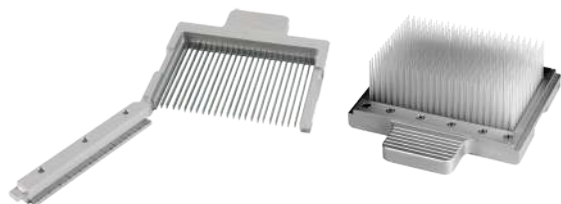
FIXED

SERIAL DILUTION

- Recommended for volume range 1-125 ul
- Maximum volume 125 ul
- Requires Wash Manifold 550-A-10-SR
- Serial Dilution by COLUMN
- Pipette to 96 labware
- The PP will automatically perform the serial dilution operation using the programmed method

PP 384 channel Low Volume Pipettors (125)

## 384-A-01-EZL-SL



384

DISPOSABLE

- Recommended for volume range 0.5-125 ul
- EZ-Load Head - no tools required
- Pipette to 384 labware
- Pipette to 1536 labware; the PP will automatically index the head to 4 quadrants
- When pipetting 1 ul and below the pipetting method will be the key factor for best precision, please contact Apricot Designs if advice is needed

### Recommended tips for 1 - 125 ul volumes

Product Number	Description	Max Vol	Tips / Rack	Racks / Case
125-384-EZ-NS	Non-Sterile	125 ul	384	20
125-384-EZ-S	Sterile	125 ul	384	20

### Recommended tips for 0.5 - 50 ul volumes

Product Number	Description	Max Vol	Tips / Rack	Racks / Case
050-384-EZ-NS	Non-Sterile	50 ul	384	20
050-384-EZ-S	Sterile	50 ul	384	20

### Recommended tips for 0.5 - 15 ul volumes

Product Number	Description	Max Vol	Tips / Rack	Racks / Case
015-384-EZ-NS	Non-Sterile	15 ul	384	20
015-384-EZ-S	Sterile	15 ul	384	20

## 384-A-01-EZL-SL-096



96

DISPOSABLE

- Recommended for volume range 0.5-125 ul
- EZ-Load Head - no tools required
- "Offset" head allows 384 channel pipettor to work with 96 well plates
- Pipette to 96 labware
- When pipetting 1 ul and below the pipetting method will be the key factor for best precision, please contact Apricot Designs if advice is needed

### Recommended tips for 10 - 125 ul volumes

Product Number	Description	Max Vol	Tips / Rack	Racks / Case
125-096-EZ-NS	Non-Sterile	125 ul	96	40
125-096-EZ-S	Sterile	125 ul	96	40

### Recommended tips for 1 - 50 ul volumes

Product Number	Description	Max Vol	Tips / Rack	Racks / Case
050-096-EZ-NS	Non-Sterile	50 ul	96	40
050-096-EZ-S	Sterile	50 ul	96	40

### Recommended tips for 0.5 - 15 ul volumes

Product Number	Description	Max Vol	Tips / Rack	Racks / Case
015-096-EZ-NS	Non-Sterile	15 ul	96	40
015-096-EZ-S	Sterile	15 ul	96	40

PP 384 channel Low Volume Pipettors (125)

## 384-A-01-EZL-SC



16

DISPOSABLE

SERIAL DILUTION

- Recommended for volume range 0.5-125 ul
- EZ-Load Head - no tools required
- Serial Dilution by COLUMN
- Pipette to 384 labware
- The PP will automatically perform the serial dilution operation using the programmed method

### Recommended tips for 1 - 125 ul volumes

Product Number	Description	Max Vol	Tips / Strip	Strips / Rack	Racks / Case
125-016-EZ-NS	Non-Sterile	125 ul	16	12	20
125-016-EZ-S	Sterile	125 ul	16	12	20

### Recommended tips for 0.5 - 15 ul volumes

Product Number	Description	Max Vol	Tips / Strip	Strips / Rack	Racks / Case
015-016-EZ-NS	Non-Sterile	15 ul	16	12	20
015-016-EZ-S	Sterile	15 ul	16	12	20

### Recommended tips for 0.5 - 50 ul volumes

Product Number	Description	Max Vol	Tips / Strip	Strips / Rack	Racks / Case
050-016-EZ-NS	Non-Sterile	50 ul	16	12	20
050-016-EZ-S	Sterile	50 ul	16	12	20

## 384-A-01-EZL-SR



24

DISPOSABLE

SERIAL DILUTION

- Recommended for volume range 0.5-125 ul
- EZ-Load Head - no tools required
- Serial Dilution by ROW
- Pipette to 384 labware
- The PP will automatically perform the serial dilution operation using the programmed method

### Recommended tips for 1 - 125 ul volumes

Product Number	Description	Max Vol	Tips / Strip	Strips / Rack	Racks / Case
125-024-EZ-NS	Non-Sterile	125 ul	24	8	20
125-024-EZ-S	Sterile	125 ul	24	8	20

### Recommended tips for 0.5 - 15 ul volumes

Product Number	Description	Max Vol	Tips / Strip	Strips / Rack	Racks / Case
015-024-EZ-NS	Non-Sterile	15 ul	24	8	20
015-024-EZ-S	Sterile	15 ul	24	8	20

### Recommended tips for 0.5 - 50 ul volumes

Product Number	Description	Max Vol	Tips / Strip	Strips / Rack	Racks / Case
050-024-EZ-NS	Non-Sterile	50 ul	24	8	20
050-024-EZ-S	Sterile	50 ul	24	8	20

**384-A-01-096-EZL-SC**



8
DISPOSABLE
SERIAL DILUTION

- Recommended for volume range 0.5-125 ul**
- EZ-Load Head - no tools required
- Serial Dilution by COLUMN
- Pipette to 96 labware
- “Offset” head allows 384 channel pipettor to work with 96 well plates
- The PP will automatically perform the serial dilution operation using the programmed method

**Recommended tips for 1 - 125 ul volumes**

Product Number	Description	Max Vol	Tips / Strip	Strips / Rack	Racks / Case
125-008-EZ-NS	Non-Sterile	125 ul	8	12	20
125-008-EZ-S	Sterile	125 ul	8	12	20

**Recommended tips for 0.5 - 15 ul volumes**

Product Number	Description	Max Vol	Tips / Strip	Strips / Rack	Racks / Case
015-008-EZ-NS	Non-Sterile	15 ul	8	12	20
015-008-EZ-S	Sterile	15 ul	8	12	20

**Recommended tips for 0.5 - 50 ul volumes**

Product Number	Description	Max Vol	Tips / Strip	Strips / Rack	Racks / Case
050-008-EZ-NS	Non-Sterile	50 ul	8	12	20
050-008-EZ-S	Sterile	50 ul	8	12	20

**384-A-01-096-EZL-SR**



12
DISPOSABLE
SERIAL DILUTION

- Recommended for volume range 0.5-125 ul**
- EZ-Load Head - no tools required
- Serial Dilution by ROW
- Pipette to 96 labware
- “Offset” head allows 384 channel pipettor to work with 96 well plates
- The PP will automatically perform the serial dilution operation using the programmed method

**Recommended tips for 10 - 125 ul volumes**

Product Number	Description	Max Vol	Tips / Strip	Strips / Rack	Racks / Case
125-012-EZ-NS	Non-Sterile	125 ul	12	8	20
125-012-EZ-S	Sterile	125 ul	12	8	20

**Recommended tips for 0.5 - 15 ul volumes**

Product Number	Description	Max Vol	Tips / Strip	Strips / Rack	Racks / Case
015-012-EZ-NS	Non-Sterile	15 ul	12	8	20
015-012-EZ-S	Sterile	15 ul	12	8	20

**Recommended tips for 0.5 - 50 ul volumes**

Product Number	Description	Max Vol	Tips / Strip	Strips / Rack	Racks / Case
050-012-EZ-NS	Non-Sterile	50 ul	12	8	20
050-012-EZ-S	Sterile	50 ul	12	8	20

**384-A-01-EZL-SC-13**



**16**   **DISPOSABLE**   **SERIAL DILUTION**

- Recommended for volume range 0.5-125 ul
- EZ-Load Head - no tools required
- Serial Dilution by COLUMN x2, Starting on columns 1 & 13
- Pipette to 384 labware
- For use with i-Pipette models equipped with manual or motorized serial dilution shuttle

**Recommended tips for 1 - 125 ul volumes**

Product Number	Description	Max Vol	Tips / Strip	Strips / Rack	Racks / Case
125-016-EZ-NS	Non-Sterile	125 ul	16	12	20
125-016-EZ-S	Sterile	125 ul	16	12	20

**Recommended tips for 0.5 - 15 ul volumes**

Product Number	Description	Max Vol	Tips / Strip	Strips / Rack	Racks / Case
015-016-EZ-NS	Non-Sterile	15 ul	16	12	20
015-016-EZ-S	Sterile	15 ul	16	12	20

**Recommended tips for 0.5 - 50 ul volumes**

Product Number	Description	Max Vol	Tips / Strip	Strips / Rack	Racks / Case
050-016-EZ-NS	Non-Sterile	50 ul	16	12	20
050-016-EZ-S	Sterile	50 ul	16	12	20

PP 384 channel Low Volume Pipettors (125)

## 125-A-01-023



384 FIXED

- Recommended for volume range 1-125 ul
- Maximum volume 125 ul
- Requires Wash Manifold 125-A-09-384
- Pipette to 384 labware
- When pipetting 1 ul and below the pipetting method will be the key factor for best precision, please contact Apricot Designs if advice is needed

## 125-A-01-025U



384 FIXED

- Recommended for volume range 0.5-25 ul
- Maximum volume 25 ul
- Requires Wash Manifold 125-A-09-384
- Pipette to 384 labware
- When pipetting 1 ul and below the pipetting method will be the key factor for best precision, please contact Apricot Designs if advice is needed

## 125-A-03-023



96 FIXED

- Recommended for volume range 1-125 ul
- Maximum volume 125 ul
- Requires Wash Manifold 125-A-06-096
- Pipette to 96 labware
- "Offset" head allows 384 channel pipettor to work with 96 well plates

## 125-A-03-023-25U



96 FIXED

- Recommended for volume range 0.5-25 ul
- Maximum volume 25 ul
- Requires Wash Manifold 125-A-06-096
- Pipette to 96 labware
- "Offset" head allows 384 channel pipettor to work with 96 well plates
- When pipetting 1 ul and below the pipetting method will be the key factor for best precision, please contact Apricot Designs if advice is needed

PP 384 channel Low Volume Pipettors (125)

## 125-A-01-023



16 FIXED SERIAL DILUTION

- Recommended for volume range 1-125 ul
- Maximum volume 125 ul
- Requires Wash Manifold 125-A-09-384-SC
- Serial Dilution by COLUMN
- Pipette to 384 labware
- The PP will automatically perform the serial dilution operation using the programmed method

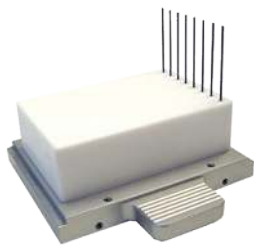
## 125-A-01-025U



24 FIXED SERIAL DILUTION

- Recommended for volume range 1-125 ul
- Maximum volume 125 ul
- Requires Wash Manifold 125-A-09-384-SR
- Serial Dilution by ROW
- Pipette to 384 labware
- The PP will automatically perform the serial dilution operation using the programmed method

## 125-A-03-023



8 FIXED SERIAL DILUTION

- Recommended for volume range 1-125 ul
- Maximum volume 125 ul
- Requires Wash Manifold 125-A-09-096-SC
- Serial Dilution by COLUMN
- Pipette to 96 labware
- "Offset" head allows 384 channel pipettor to work with 96 well plates
- The PP will automatically perform the serial dilution operation using the programmed method

## 125-A-03-023-25U



12 FIXED SERIAL DILUTION

- Recommended for volume range 1-125 ul
- Maximum volume 125 ul
- Requires Wash Manifold 125-A-09-096-SR
- Serial Dilution by ROW
- Pipette to 96 labware
- "Offset" head allows 384 channel pipettor to work with 96 well plates
- The PP will automatically perform the serial dilution operation using the programmed method