



Head Selection & Tip Ordering Guide

Locate your Apricot Designs pipettor model in the list below and then proceed to the head & tip selection guide for your pipettor.

If you have any questions about which head or tips to use for your Apricot pipettor, please contact us at:

626-966-3299 or info@apricotdesigns.com.

Total Pipetting Solution (TPS) Models

TPS-24

24-channel version
Page 2

TPS-96H

96-channel 550 ul
maximum volume
versions
Page 5

TPS-96L

96-channel 125 ul
maximum volume
versions
Page 7

TPS-384

384-channel 125 ul
maximum volume
versions
Page 9

TPS Total Pipetting Solution 24 channel models

TPS24-A-01-ESP



16/24 **DISPOSABLE** **SERIAL DILUTION**

- **Recommended for volume range 1-125 ul**
- For serial dilution by ROW or columns for 384 labware
- The TPS-24 will load and unload tips automatically from the rack of 384 ESP tips
- The TPS-24 will load all 24 tips for ROW serial dilutions with 384 plates in the landscape orientation
- The TPS-24 will load the middle 16 tips for COLUMN serial dilutions with 384 plates in the portrait orientation

Recommended tips for 1 - 125 ul volumes				
Product Number	Description	Max Vol	Tips / Rack	Racks / Case
125-384-AL-NS	Non-Sterile	125 ul	384	20
125-384-AL-S	Sterile	125 ul	384	20

Recommended tips for 0.5 - 15 ul volumes				
Product Number	Description	Max Vol	Tips / Rack	Racks / Case
015-384-AL-NS	Non-Sterile	15 ul	384	20
015-384-AL-S	Sterile	15 ul	384	20

Recommended tips for 0.5 - 50 ul volumes				
Product Number	Description	Max Vol	Tips / Rack	Racks / Case
050-384-AL-NS	Non-Sterile	50 ul	384	20
050-384-AL-S	Sterile	50 ul	384	20

TPS24-A-01-ESP-12



8/12 **DISPOSABLE** **SERIAL DILUTION**

- **Recommended for volume range 1-125 ul**
- For serial dilution by ROW or columns for 96 labware
- The TPS-24 will load and unload tips automatically from the rack of 384 ESP tips
- The TPS-24 will load all 12 tips for ROW serial dilutions with 96 plates in the landscape orientation
- The TPS-24 will load the middle 8 tips for COLUMN serial dilutions with 96 plates in the portrait orientation

Recommended tips for 1 - 125 ul volumes				
Product Number	Description	Max Vol	Tips / Rack	Racks / Case
125-384-AL-NS	Non-Sterile	125 ul	384	20
125-384-ESP-S	Sterile	125 ul	384	20

Recommended tips for 0.5 - 15 ul volumes				
Product Number	Description	Max Vol	Tips / Rack	Racks / Case
015-384-AL-NS	Non-Sterile	15 ul	384	20
015-384-AL-S	Sterile	15 ul	384	20

Recommended tips for 0.5 - 50 ul volumes				
Product Number	Description	Max Vol	Tips / Rack	Racks / Case
050-384-AL-NS	Non-Sterile	50 ul	384	20
050-384-AL-S	Sterile	50 ul	384	20

TPS Total Pipetting Solution 24 channel models

TPS24-A-03-125



24 FIXED SERIAL DILUTION

- Recommended for volume range 1-125 ul
- Maximum volume 125 ul
- Pipette to 384 labware in landscape orientation
- Serial Dilution by ROW

TPS24-A-03-025



24 FIXED SERIAL DILUTION

- Recommended for volume range 0.5-25 ul
- Maximum volume 25 ul
- Requires Wash Manifold 125-A-09-384
- Pipette to 384 labware in landscape orientation
- Serial Dilution by ROW

TPS24-A-04-125



16 FIXED SERIAL DILUTION

- Recommended for volume range 1-125 ul
- Maximum volume 125 ul
- Requires Wash Manifold 125-A-06-096
- Pipette to 96 labware in portrait orientation
- Serial Dilution by COLUMN

TPS24-A-04-025



16 FIXED SERIAL DILUTION

- Recommended for volume range 0.5-25 ul
- Maximum volume 25 ul
- Requires Wash Manifold 125-A-06-096
- Pipette to 96 labware in portrait orientation
- Serial Dilution by COLUMN

TPS Total Pipetting Solution 24 channel models

TPS24-A-05-125



12 FIXED SERIAL DILUTION

- Recommended for volume range 1-125 ul
- Maximum volume 125 ul
- Pipette to 96 labware in landscape orientation
- Serial Dilution by ROW

TPS24-A-06-125



8 FIXED SERIAL DILUTION

- Recommended for volume range 1-125 ul
- Maximum volume 125 ul
- Pipette to 96 labware in portrait orientation
- Serial Dilution by COLUMN

TPS24-A-07-250



12 FIXED SERIAL DILUTION

- Recommended for volume range 2-250 ul
- Maximum volume 250 ul
- Pipette to 96 labware in landscape orientation
- Serial Dilution by ROW

TPS24-A-08-250



8 FIXED SERIAL DILUTION

- Recommended for volume range 2-250 ul
- Maximum volume 250 ul
- Pipette to 96 labware in portrait orientation
- Serial Dilution by COLUMN

096-A-01N

96 **DISPOSABLE**

- **Recommended for volume range 5-550 ul**
- The TPS-96 will load and unload tips automatically
- Pipette to 96 labware
- Pipette to 384 labware; the TPS-96 will automatically index the head to 4 quadrants

Recommended tips for 5 - 550 ul volumes

Product Number	Description	Max Vol	Tips / Rack	Racks / Case
550-096-AL-NS	Non-Sterile	550 ul	96	40
550-096-AL-S	Sterile	550 ul	96	40
550-096-AL-FS	Sterile, Filter Tip	400 ul	96	40

Recommended tips for 2 - 250 ul volumes

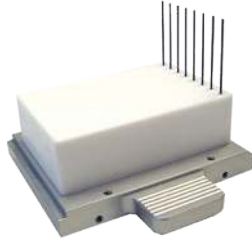
Product Number	Description	Max Vol	Tips / Rack	Racks / Case
250-096-AL-NS	Non-Sterile	250 ul	96	40
250-096-AL-S	Sterile	250 ul	96	40
250-096-AL-FS	Sterile, Filter Tip	200 ul	96	40

096-A-02T

96 **FIXED**

- **Recommended for volume range 5-550 ul**
- **Maximum volume 550 ul**
- Requires Wash Manifold 550-A-10N & Tubing Set 550-A-18
- Pipette to 96 labware
- Pipette to 384 labware; the PP will automatically index the head to 4 quadrants

096-A-02T-SC-M



8 FIXED SERIAL DILUTION

- Recommended for volume range 5-550 ul
- Maximum volume 550 ul
- Requires Wash Manifold 550-A-10-SC
- Serial Dilution by COLUMN
- Pipette to 96 labware
- The PP will automatically perform the serial dilution operation using the programmed method

096-A-02T-SR



12 FIXED SERIAL DILUTION

- Recommended for volume range 5-550 ul
- Maximum volume 550 ul
- Requires Wash Manifold 550-A-10-SR
- Serial Dilution by ROW
- Pipette to 96 labware
- The PP will automatically perform the serial dilution operation using the programmed method

TPS Total Pipetting Solution 96 channel low volume models

TPS96L-A-01-C-ESP



96
DISPOSABLE
SERIAL DILUTION

- **Recommended for volume range 0.5-125 ul**
- When pipetting 1 ul and below the pipetting method will be the key factor for best precision, please contact Apricot Designs if advice is needed
- The TPS-96 will load and unload tips automatically from the rack of 384 ESP tips
- Pipette to 96 labware
- Pipette to 384 labware; the TPS-96 will automatically index the head to 4 quadrants
- This head will also automatically load and unload tips for serial dilution by row or column

Recommended tips for 1 - 125 ul volumes

Product Number	Description	Max Vol	Tips / Rack	Racks / Case
125-384-AL-NS	Non-Sterile	125 ul	384	20
125-384-AL-S	Sterile	125 ul	384	20

Recommended tips for 0.5 - 15 ul volumes

Product Number	Description	Max Vol	Tips / Rack	Racks / Case
015-384-AL-NS	Non-Sterile	15 ul	384	20
015-384-AL-S	Sterile	15 ul	384	20

Recommended tips for 0.5 - 50 ul volumes

Product Number	Description	Max Vol	Tips / Rack	Racks / Case
050-384-AL-NS	Non-Sterile	50 ul	384	20
050-384-AL-S	Sterile	50 ul	384	20

096-A-02T-125



96
FIXED

- **Recommended for volume range 1-125 ul**
- **Maximum volume 125 ul**
- Requires Wash Manifold 550-A-10N & Tubing Set 550-A-18
- Pipette to 96 labware
- Pipette to 384 labware; the PP will automatically index the head to 4 quadrants

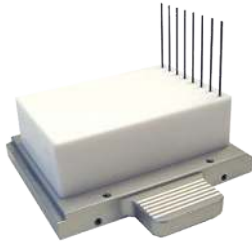
096-A-02T-25



96
FIXED

- **Recommended for volume range 0.5-25 ul**
- **Maximum volume 25 ul**
- Requires Wash Manifold 550-A-10N & Tubing Set 550-A-18
- Pipette to 96 labware
- Pipette to 384 labware; the PP will automatically index the head to 4 quadrants
- When pipetting 1 ul and below the pipetting method will be the key factor for best precision, please contact Apricot Designs if advice is needed

096-A-02T-SC-M



8 FIXED SERIAL DILUTION

- Recommended for volume range 5-550 ul
- Maximum volume 550 ul
- Requires Wash Manifold 550-A-10-SC
- Serial Dilution by COLUMN
- Pipette to 96 labware
- The TPS-96 will automatically perform the serial dilution operation using the programmed method

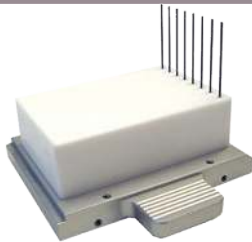
096-A-02T-125-SR



12 FIXED SERIAL DILUTION

- Recommended for volume range 5-550 ul
- Maximum volume 550 ul
- Requires Wash Manifold 550-A-10-SR
- Serial Dilution by ROW
- Pipette to 96 labware
- The TPS-96 will automatically perform the serial dilution operation using the programmed method

096-A-02T-125-SC-M



8 FIXED SERIAL DILUTION

- Recommended for volume range 1-125 ul
- Maximum volume 125 ul
- Requires Wash Manifold 550-A-10-SC
- Serial Dilution by COLUMN
- Pipette to 96 labware
- The TPS-96 will automatically perform the serial dilution operation using the programmed method

096-A-02T-125-SR



12 FIXED SERIAL DILUTION

- Recommended for volume range 1-125 ul
- Maximum volume 125 ul
- Requires Wash Manifold 550-A-10-SR
- Serial Dilution by ROW
- Pipette to 96 labware
- The TPS-96 will automatically perform the serial dilution operation using the programmed method

TPS384-A-01-C-ESP



384 **DISPOSABLE** **SERIAL DILUTION**

- **Recommended for volume range 0.5-125 ul**
- The TPS-384 will load and unload tips automatically
- Pipette to 384 labware
- Pipette to 1536 labware; the TPS-384 will automatically index the head to 4 quadrants
- This head will also automatically load and unload tips for serial dilution by row or column
- When pipetting 1 ul and below the pipetting method will be the key factor for best precision, please contact Apricot Designs if advice is needed

Recommended tips for 1 - 125 ul volumes

Product Number	Description	Max Vol	Tips / Rack	Racks / Case
125-384-AL-NS	Non-Sterile	125 ul	384	20
125-384-AL-S	Sterile	125 ul	384	20

Recommended tips for 0.5 - 15 ul volumes

Product Number	Description	Max Vol	Tips / Rack	Racks / Case
015-384-AL-NS	Non-Sterile	15 ul	384	20
015-384-AL-S	Sterile	15 ul	384	20

Recommended tips for 0.5 - 50 ul volumes

Product Number	Description	Max Vol	Tips / Rack	Racks / Case
050-384-AL-NS	Non-Sterile	50 ul	384	20
050-384-AL-S	Sterile	50 ul	384	20

TPS384-A-01-C-096ESP



96 **DISPOSABLE** **SERIAL DILUTION**

- **Recommended for volume range 0.5-125 ul**
- The TPS-384 will load and unload tips automatically from the rack of 384
- "Offset" head allows 384 channel pipettor to work with 96 well plates
- Pipette to 96 labware
- This head will also automatically load and unload tips for serial dilution by row or column
- When pipetting 1 ul and below the pipetting method will be the key factor for best precision, please contact Apricot Designs if advice is needed

Recommended tips for 1 - 125 ul volumes

Product Number	Description	Max Vol	Tips / Rack	Racks / Case
125-384-AL-NS	Non-Sterile	125 ul	384	20
125-384-AL-S	Sterile	125 ul	384	20

Recommended tips for 0.5 - 15 ul volumes

Product Number	Description	Max Vol	Tips / Rack	Racks / Case
015-384-AL-NS	Non-Sterile	15 ul	384	20
015-384-AL-S	Sterile	15 ul	384	20

Recommended tips for 0.5 - 50 ul volumes

Product Number	Description	Max Vol	Tips / Rack	Racks / Case
050-384-AL-NS	Non-Sterile	50 ul	384	20
050-384-AL-S	Sterile	50 ul	384	20

125-A-01-023



384 **FIXED**

- Recommended for volume range 1-125 ul
- Maximum volume 125 ul
- Requires Wash Manifold 125-A-09-384
- Pipette to 384 labware
- When pipetting 1 ul and below the pipetting method will be the key factor for best precision, please contact Apricot Designs if advice is needed

125-A-01-025U



384 **FIXED**

- Recommended for volume range 0.5-25 ul
- Maximum volume 25 ul
- Requires Wash Manifold 125-A-09-384
- Pipette to 384 labware
- When pipetting 1 ul and below the pipetting method will be the key factor for best precision, please contact Apricot Designs if advice is needed

125-A-03-023



96 **FIXED**

- Recommended for volume range 1-125 ul
- Maximum volume 125 ul
- Requires Wash Manifold 125-A-06-096
- Pipette to 96 labware
- "Offset" head allows 384 channel pipettor to work with 96 well plates

125-A-03-023-25U



96 **FIXED**

- Recommended for volume range 0.5-25 ul
- Maximum volume 25 ul
- Requires Wash Manifold 125-A-06-096
- Pipette to 96 labware
- "Offset" head allows 384 channel pipettor to work with 96 well plates
- When pipetting 1 ul and below the pipetting method will be the key factor for best precision, please contact Apricot Designs if advice is needed

125-A-01-023



16 FIXED SERIAL DILUTION

- Recommended for volume range 1-125 ul
- Maximum volume 125 ul
- Requires Wash Manifold 125-A-09-384-SC
- Serial Dilution by COLUMN
- Pipette to 384 labware
- The TPS will automatically perform the serial dilution operation using the programmed method

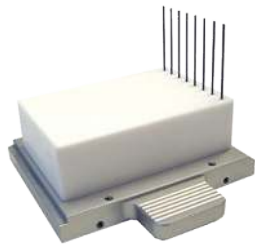
125-A-01-025U



24 FIXED SERIAL DILUTION

- Recommended for volume range 1-125 ul
- Maximum volume 125 ul
- Requires Wash Manifold 125-A-09-384-SR
- Serial Dilution by ROW
- Pipette to 384 labware
- The TPS will automatically perform the serial dilution operation using the programmed method

125-A-03-023



8 FIXED SERIAL DILUTION

- Recommended for volume range 1-125 ul
- Maximum volume 125 ul
- Requires Wash Manifold 125-A-09-096-SC
- Serial Dilution by COLUMN
- Pipette to 96 labware
- "Offset" head allows 384 channel pipettor to work with 96 well plates
- The TPS will automatically perform the serial dilution operation using the programmed method

125-A-03-023-25U



12 FIXED SERIAL DILUTION

- Recommended for volume range 1-125 ul
- Maximum volume 125 ul
- Requires Wash Manifold 125-A-09-096-SR
- Serial Dilution by ROW
- Pipette to 96 labware
- "Offset" head allows 384 channel pipettor to work with 96 well plates
- The TPS will automatically perform the serial dilution operation using the programmed method