



Head Selection & Tip Ordering Guide

Locate your Apricot Designs i-Pipette in the list below and then proceed to the head & tip selection guide for your pipettor.

If you have any questions about which head or tips to use for your Apricot pipettor, please contact us at:

626-966-3299 or info@apricotdesigns.com.

i-Pipette Models

iPBA-96-500
iPBA2-96-500
iPBA2S-96-500
iPPA-96-500
iPPA2-96-500
iPPA2S-96-500
iPPA2MS-96-500

96-channel 500 ul
maximum volume
versions
Page 2

iPBA-96-1000
iPBA2-96-1000
iPBA2S-96-1000
iPPA-96-1000
iPPA2-96-1000
iPPA2S-96-1000
iPPA2MS-96-1000

96-channel 1000 ul
maximum volume
versions
Page 5

iPBA-96-125
iPBA2-96-125
iPBA2S-96-125
iPPA-96-125
iPPA2-96-125
iPPA2S-96-125
iPPA2MS-96-125

96-channel 125 ul
maximum volume
versions
Page 8

iPBA-384-125
iPBA2-384-125
iPBA2S-384-125
iPPA-384-125
iPPA2-384-125
iPPA2S-384-125
iPPA2MS-384-125

384-channel 125 ul
maximum volume
versions
Page 9

Head Selection & Tip Ordering Guide

i-Pipette 96 channel High Volume Pipettors (-500)

iPBA-96-500
 iPBA2-96-500
 iPBA2S-96-500
 IPPA-96-500
 IPPA2-96-500
 IPPA2S-96-500
 IPPA2MS-96-500

096-A-01-EZL-SL-550

96 **DISPOSABLE**

- **Recommended for volume range 2-500 ul**
- EZ-Load Head - no tools required
- Pipette to 96 labware
- Pipette to 384 labware using the iP Indexer 384 supplied with 96 channel i-Pipette models

Recommended tips for 5 - 500 ul volumes

Product Number	Description	Max Vol	Tips / Rack	Racks / Case
550-096-EZ-NS	Non-Sterile	550 ul	96	40
550-096-EZ-S	Sterile	550 ul	96	40
550-096-EZ-FS	Sterile, Filter Tip	400 ul	96	40

Recommended tips for 2 - 250 ul volumes

Product Number	Description	Max Vol	Tips / Rack	Racks / Case
250-096-EZ-NS	Non-Sterile	250 ul	96	40
250-096-EZ-S	Sterile	250 ul	96	40
250-096-EZ-FS	Sterile, Filter Tip	(pending)	96	40

096-A-01-EZL-550-SC

8 **DISPOSABLE** **SERIAL DILUTION**

- **Recommended for volume range 2-500 ul**
- EZ-Load Head - no tools required
- Serial Dilution by COLUMN
- Pipette to 96 labware
- For use with i-Pipette models equipped with manual or motorized serial dilution shuttle

Recommended tips for 5 - 500 ul volumes

Product Number	Description	Max Vol	Tips / Strip	Strips / Rack	Racks / Case
550-008-EZ-NS	Non-Sterile	550 ul	8	12	40
550-008-EZ-S	Sterile	550 ul	8	12	40
550-008-EZ-FS	Sterile, Filter Tip	400 ul	8	12	40

Recommended tips for 2 - 250 ul volumes

Product Number	Description	Max Vol	Tips / Strip	Strips / Rack	Racks / Case
250-008-EZ-NS	Non-Sterile	250 ul	8	12	40
250-008-EZ-S	Sterile	250 ul	8	12	40
250-008-EZ-FS	Sterile, Filter Tip	(pending)	8	12	40

iPBA-96-500
 iPBA2-96-500
 iPBA2S-96-500
 iPPA-96-500
 iPPA2-96-500
 iPPA2S-96-500
 iPPA2MS-96-500

096-A-01-EZL-SL



96 DISPOSABLE

Recommended tips for 2 - 125 ul volumes

Product Number	Description	Max Vol	Tips / Rack	Racks / Case
125-096-EZ-NS	Non-Sterile	125 ul	96	40
125-096-EZ-S	Sterile	125 ul	96	40

Recommended tips for 2 - 50 ul volumes

Product Number	Description	Max Vol	Tips / Rack	Racks / Case
050-096-EZ-NS	Non-Sterile	50 ul	96	40
050-096-EZ-S	Sterile	50 ul	96	40

- Recommended for volume range 2-125 ul
- The high-volume pipettor may give acceptable results below 2 ul; a low-volume pipettor model is recommended for best performance at < 2ul.
- EZ-Load Head - no tools required
- Pipette to 96 labware
- Pipette to 384 labware using the iP Indexer 384 supplied with 96 channel i-Pipette models
- **CAUTION:** The maximum volume of this tip is much lower than the pipettor plunger capacity. When using this head, the method must be set up correctly to prevent aspiration of liquid beyond the maximum volume of the tip in order to prevent undesired flooding of the pipettor mechanism.

Recommended tips for 2 - 15 ul volumes

Product Number	Description	Max Vol	Tips / Rack	Racks / Case
015-096-EZ-NS	Non-Sterile	15 ul	96	20
015-096-EZ-S	Sterile	15 ul	96	20

096-A-01-EZL-SC



8 DISPOSABLE SERIAL DILUTION

Recommended tips for 2 - 125 ul volumes

Product Number	Description	Max Vol	Tips / Strip	Strips / Rack	Racks / Case
125-008-EZ-NS	Non-Sterile	125 ul	8	12	20
125-008-EZ-S	Sterile	125 ul	8	12	20

Recommended tips for 2 - 50 ul volumes

Product Number	Description	Max Vol	Tips / Strip	Strips / Rack	Racks / Case
050-008-EZ-NS	Non-Sterile	50 ul	8	12	20
050-008-EZ-S	Sterile	50 ul	8	12	20

- Recommended for volume range 2-125 ul
- The high-volume pipettor may give acceptable results below 2 ul; a low-volume pipettor model is recommended for best performance at < 2ul.
- EZ-Load Head - no tools required
- Serial Dilution by COLUMN
- Pipette to 96 labware
- For use with i-Pipette models equipped with manual or motorized serial dilution shuttle
- **CAUTION:** The maximum volume of this tip is much lower than the pipettor plunger capacity. When using this head, the method must be set up correctly to prevent aspiration of liquid beyond the maximum volume of the tip in order to prevent undesired flooding of the pipettor mechanism.

Recommended tips for 2 - 25 ul volumes

Product Number	Description	Max Vol	Tips / Strip	Strips / Rack	Racks / Case
015-008-EZ-NS	Non-Sterile	15 ul	8	12	20
015-008-EZ-S	Sterile	15 ul	8	12	20



- **Special Head for Corning HTS Transwell Plates**
- **Recommended for volume range 2-500 ul**
- EZ-Load Head - combined with Tip Collar and Adaptor Plate
- User loads 24 tips manually into Tip Collar

Recommended tips for 5 - 500 ul volumes

Product Number	Description	Max Vol	Tips / Rack	Racks / Case
550-096-EZ-NS	Non-Sterile	550 ul	96	40
550-096-EZ-S	Sterile	550 ul	96	40
550-096-EZ-FS	Sterile, Filter Tip	400 ul	96	40

Recommended tips for 2 - 250 ul volumes

Product Number	Description	Max Vol	Tips / Rack	Racks / Case
250-096-EZ-NS	Non-Sterile	250 ul	96	40
250-096-EZ-S	Sterile	250 ul	96	40
250-096-EZ-FS	Sterile, Filter Tip	(pending)	96	40

Head Selection & Tip Ordering Guide

i-Pipette 96 channel Extra High Volume Pipettors (-1000)

iPBA-96-1000
 iPBA2-96-1000
 iPBA2S-96-1000
 iPPA-96-1000
 iPPA2-96-1000
 iPPA2S-96-1000
 iPPA2MS-96-1000

096-A-01-EZL-SL-1000

96
DISPOSABLE

- **Recommended for volume range 10-1000 ul**
- EZ-Load Head - no tools required
- Pipette to 96 labware
- Pipette to 384 labware using the iP Indexer 384 supplied with 96 channel i-Pipette models

Recommended tips for 10 - 1000 ul volumes

Product Number	Description	Max Vol	Tips / Rack	Racks / Case
1000-096-EZ-NS	Non-Sterile	1000 ul	96	40
1000-096-EZ-S	Sterile	1000 ul	96	40
1000-096-EZ-FS	Sterile, Filter Tip	(pending)	96	40

096-A-01-EZL-1000-SC

8
DISPOSABLE
SERIAL DILUTION

- **Recommended for volume range 10-1000 ul**
- EZ-Load Head - no tools required
- Serial Dilution by COLUMN
- Pipette to 96 labware
- For use with i-Pipette models equipped with manual or motorized serial dilution shuttle

Recommended tips for 10 - 1000 ul volumes

Product Number	Description	Max Vol	Tips / Strip	Strips / Rack	Racks / Case
1000-008-EZ-NS	Non-Sterile	1000 ul	8	12	40
1000-008-EZ-S	Sterile	1000 ul	8	12	40
1000-008-EZ-FS	Sterile, Filter Tip	(pending)	8	12	40

Head Selection & Tip Ordering Guide

i-Pipette 96 channel Extra High Volume Pipettors (-1000)

iPBA-96-1000
 iPBA2-96-1000
 iPBA2S-96-1000
 iPPA-96-1000
 iPPA2-96-1000
 iPPA2S-96-1000
 iPPA2MS-96-1000

096-A-01-EZL-SL-550



96 DISPOSABLE

- Recommended for volume range 2-500 ul
- EZ-Load Head - no tools required
- Pipette to 96 labware
- Pipette to 384 labware using the iP Indexer 384 supplied with 96 channel i-Pipette models
- **CAUTION: The maximum volume of this tip is much lower than the pipettor plunger capacity. When using this head, the method must be set up correctly to prevent aspiration of liquid beyond the maximum volume of the tip in order to prevent undesired flooding of the pipettor mechanism.**

Recommended tips for 5 - 500 ul volumes

Product Number	Description	Max Vol	Tips / Rack	Racks / Case
550-096-EZ-NS	Non-Sterile	550 ul	96	40
550-096-EZ-S	Sterile	550 ul	96	40
550-096-EZ-FS	Sterile, Filter Tip	400 ul	96	40

Recommended tips for 2 - 250 ul volumes

Product Number	Description	Max Vol	Tips / Rack	Racks / Case
250-096-EZ-NS	Non-Sterile	250 ul	96	40
250-096-EZ-S	Sterile	250 ul	96	40
250-096-EZ-FS	Sterile, Filter Tip	(pending)	96	40

096-A-01-EZL-550-SC



8 DISPOSABLE SERIAL DILUTION

- Recommended for volume range 2-500 ul
- EZ-Load Head - no tools required
- Serial Dilution by COLUMN
- Pipette to 96 labware
- For use with i-Pipette models equipped with manual or motorized serial dilution shuttle
- **CAUTION: The maximum volume of this tip is much lower than the pipettor plunger capacity. When using this head, the method must be set up correctly to prevent aspiration of liquid beyond the maximum volume of the tip in order to prevent undesired flooding of the pipettor mechanism.**

Recommended tips for 5 - 500 ul volumes

Product Number	Description	Max Vol	Tips / Strip	Strips / Rack	Racks / Case
550-008-EZ-NS	Non-Sterile	550 ul	8	12	40
550-008-EZ-S	Sterile	550 ul	8	12	40
550-008-EZ-FS	Sterile, Filter Tip	400 ul	8	12	40

Recommended tips for 2 - 250 ul volumes

Product Number	Description	Max Vol	Tips / Strip	Strips / Rack	Racks / Case
250-008-EZ-NS	Non-Sterile	250 ul	8	12	40
250-008-EZ-S	Sterile	250 ul	8	12	40
250-008-EZ-FS	Sterile, Filter Tip	(pending)	8	12	40

Head Selection & Tip Ordering Guide

i-Pipette 96 channel Extra High Volume Pipettors (-1000)

iPBA-96-1000
 iPBA2-96-1000
 iPBA2S-96-1000
 iPPA-96-1000
 iPPA2-96-1000
 iPPA2S-96-1000
 iPPA2MS-96-1000

096-A-01-EZL-SL



96 DISPOSABLE

Recommended tips for 2 - 125 ul volumes				
Product Number	Description	Max Vol	Tips / Rack	Racks / Case
125-096-EZ-NS	Non-Sterile	125 ul	96	40
125-096-EZ-S	Sterile	125 ul	96	40

Recommended tips for 2 - 50 ul volumes				
Product Number	Description	Max Vol	Tips / Rack	Racks / Case
050-096-EZ-NS	Non-Sterile	50 ul	96	40
050-096-EZ-S	Sterile	50 ul	96	40

- Recommended for volume range 2-125 ul
- The high-volume pipettor may give acceptable results below 2 ul; a low-volume pipettor model is recommended for best performance at < 2ul.
- EZ-Load Head - no tools required
- Pipette to 96 labware
- Pipette to 384 labware using the iP Indexer 384 supplied with 96 channel i-Pipette models
- **CAUTION:** The maximum volume of this tip is much lower than the pipettor plunger capacity. When using this head, the method must be set up correctly to prevent aspiration of liquid beyond the maximum volume of the tip in order to prevent undesired flooding of the pipettor mechanism.

096-A-01-EZL-SC



8 DISPOSABLE SERIAL DILUTION

Recommended tips for 2 - 125 ul volumes					
Product Number	Description	Max Vol	Tips / Strip	Strips / Rack	Racks / Case
125-008-EZ-NS	Non-Sterile	125 ul	8	12	40
125-008-EZ-S	Sterile	125 ul	8	12	40

Recommended tips for 2 - 50 ul volumes					
Product Number	Description	Max Vol	Tips / Strip	Strips / Rack	Racks / Case
050-008-EZ-NS	Non-Sterile	50 ul	8	12	40
050-008-EZ-S	Sterile	50 ul	8	12	40

- Recommended for volume range 2-125 ul
- The high-volume pipettor may give acceptable results below 2 ul; a low-volume pipettor model is recommended for best performance at < 2ul.
- EZ-Load Head - no tools required
- Serial Dilution by COLUMN
- Pipette to 96 labware
- For use with i-Pipette models equipped with manual or motorized serial dilution shuttle
- **CAUTION:** The maximum volume of this tip is much lower than the pipettor plunger capacity. When using this head, the method must be set up correctly to prevent aspiration of liquid beyond the maximum volume of the tip in order to prevent undesired flooding of the pipettor mechanism.

Head Selection & Tip Ordering Guide

i-Pipette 96 channel Low Volume Pipettors (-125)

iPBA-96-125
iPBA2-96-125
iPBA2S-96-125
iPPA-96-125
iPPA2-96-125
iPPA2S-96-125
iPPA2MS-96-125

096-A-01-EZL-SL



96 DISPOSABLE

- Recommended for volume range 0.5-125 ul
- EZ-Load Head - no tools required
- Pipette to 96 labware
- Pipette to 384 labware using the iP Indexer 384 supplied with 96 channel i-Pipette models
- When pipetting 1 ul and below the pipetting method will be the key factor for best precision, please contact Apricot Designs if advice is needed

Recommended tips for 1 - 125 ul volumes

Product Number	Description	Max Vol	Tips / Rack	Racks / Case
125-096-EZ-NS	Non-Sterile	125 ul	96	40
125-096-EZ-S	Sterile	125 ul	96	40

Recommended tips for 0.5 - 15 ul volumes

Product Number	Description	Max Vol	Tips / Rack	Racks / Case
015-096-EZ-NS	Non-Sterile	15 ul	96	40
015-096-EZ-S	Sterile	15 ul	96	40

Recommended tips for 0.5 - 50 ul volumes

Product Number	Description	Max Vol	Tips / Rack	Racks / Case
050-096-EZ-NS	Non-Sterile	50 ul	96	40
050-096-EZ-S	Sterile	50 ul	96	40

096-A-01-EZL-SC



8 DISPOSABLE SERIAL DILUTION

- Recommended for volume range 0.5-125 ul
- EZ-Load Head - no tools required
- Serial Dilution by COLUMN
- Pipette to 96 labware
- For use with i-Pipette models equipped with manual or motorized serial dilution shuttle

Recommended tips for 1 - 125 ul volumes

Product Number	Description	Max Vol	Tips / Strip	Strips / Rack	Racks / Case
125-008-EZ-NS	Non-Sterile	125 ul	8	12	20
125-008-EZ-S	Sterile	125 ul	8	12	20

Recommended tips for 0.5 - 25 ul volumes

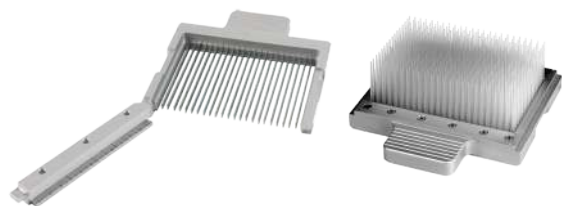
Product Number	Description	Max Vol	Tips / Strip	Strips / Rack	Racks / Case
015-008-EZ-NS	Non-Sterile	15 ul	8	12	20
015-008-EZ-S	Sterile	15 ul	8	12	20

Recommended tips for 0.5 - 50 ul volumes

Product Number	Description	Max Vol	Tips / Strip	Strips / Rack	Racks / Case
050-008-EZ-NS	Non-Sterile	50 ul	8	12	20
050-008-EZ-S	Sterile	50 ul	8	12	20

iPBA-384-125
 iPBA2-384-125
 iPBA2S-384-125
 iPPA-384-125
 iPPA2-384-125
 iPPA2S-384-125
 iPPA2MS-384-125

384-A-01-EZL-SL



384 **DISPOSABLE**

Recommended tips for 1 - 125 ul volumes

Product Number	Description	Max Vol	Tips / Rack	Racks / Case
125-384-EZ-NS	Non-Sterile	125 ul	384	20
125-384-EZ-S	Sterile	125 ul	384	20

Recommended tips for 0.5 - 50 ul volumes

Product Number	Description	Max Vol	Tips / Rack	Racks / Case
050-384-EZ-NS	Non-Sterile	50 ul	384	20
050-384-EZ-S	Sterile	50 ul	384	20

- Recommended for volume range 0.5-125 ul
- EZ-Load Head - no tools required
- Pipette to 384 labware
- When pipetting 1 ul and below the pipetting method will be the key factor for best precision, please contact Apricot Designs if advice is needed

Recommended tips for 0.5 - 15 ul volumes

Product Number	Description	Max Vol	Tips / Rack	Racks / Case
015-384-EZ-NS	Non-Sterile	15 ul	384	20
015-384SZ-S	Sterile	15 ul	384	20

384-A-01-EZL-SL-096



96 **DISPOSABLE**

Recommended tips for 10 - 125 ul volumes

Product Number	Description	Max Vol	Tips / Rack	Racks / Case
125-096-EZ-NS	Non-Sterile	125 ul	96	40
125-096-EZ-S	Sterile	125 ul	96	40

Recommended tips for 1 - 50 ul volumes

Product Number	Description	Max Vol	Tips / Rack	Racks / Case
050-096-EZ-NS	Non-Sterile	50 ul	96	40
050-096-EZ-S	Sterile	50 ul	96	40

- Recommended for volume range 0.5-125 ul
- EZ-Load Head - no tools required
- "Offset" head allows 384 channel pipettor to work with 96 well plates
- Pipette to 96 labware using the iP Indexer 96 supplied with 384 channel i-Pipette models
- When pipetting 1 ul and below the pipetting method will be the key factor for best precision, please contact Apricot Designs if advice is needed

Recommended tips for 0.5 - 15 ul volumes

Product Number	Description	Max Vol	Tips / Rack	Racks / Case
015-096-EZ-NS	Non-Sterile	15 ul	96	40
015-096-EZ-S	Sterile	15 ul	96	40

384-A-01-EZL-SC



16

DISPOSABLE

SERIAL DILUTION

Recommended tips for 1 - 125 ul volumes

Product Number	Description	Max Vol	Tips / Strip	Strips / Rack	Racks / Case
125-016-EZ-NS	Non-Sterile	125 ul	16	12	20
125-016-EZ-S	Sterile	125 ul	16	12	20

Recommended tips for 0.5 - 50 ul volumes

Product Number	Description	Max Vol	Tips / Strip	Strips / Rack	Racks / Case
050-016-EZ-NS	Non-Sterile	50 ul	16	12	20
050-016-EZ-S	Sterile	50 ul	16	12	20

- Recommended for volume range 0.05-125 ul
- EZ-Load Head - no tools required
- Serial Dilution by COLUMN
- Pipette to 384 labware
- For use with i-Pipette models equipped with manual or motorized serial dilution shuttle

Recommended tips for 0.5 - 15 ul volumes

Product Number	Description	Max Vol	Tips / Strip	Strips / Rack	Racks / Case
015-016-EZ-NS	Non-Sterile	15 ul	16	12	20
015-016-EZ-S	Sterile	15 ul	16	12	20

384-A-01-096-EZL-SC



8

DISPOSABLE

SERIAL DILUTION

Recommended tips for 1 - 125 ul volumes

Product Number	Description	Max Vol	Tips / Strip	Strips / Rack	Racks / Case
125-008-EZ-NS	Non-Sterile	125 ul	8	12	20
125-008-EZ-S	Sterile	125 ul	8	12	20

Recommended tips for 0.5 - 50 ul volumes

Product Number	Description	Max Vol	Tips / Strip	Strips / Rack	Racks / Case
050-008-EZ-NS	Non-Sterile	50 ul	8	12	20
050-008-EZ-S	Sterile	50 ul	8	12	20

- Recommended for volume range 0.5-125 ul
- EZ-Load Head - no tools required
- Serial Dilution by COLUMN
- Pipette to 96 labware
- "Offset" head allows 384 channel pipettor to work with 96 well plates
- For use with i-Pipette models equipped with manual or motorized serial dilution shuttle

Recommended tips for 0.5 - 15 ul volumes

Product Number	Description	Max Vol	Tips / Strip	Strips / Rack	Racks / Case
015-008-EZ-NS	Non-Sterile	15 ul	8	12	20
015-008-EZ-S	Sterile	15 ul	8	12	20

384-A-01-EZL-SC-13



16 **DISPOSABLE** **SERIAL DILUTION**

- Recommended for volume range 0.5-125 ul
- EZ-Load Head - no tools required
- Serial Dilution by COLUMN x2, Starting on columns 1 & 13
- Pipette to 384 labware
- For use with i-Pipette models equipped with manual or motorized serial dilution shuttle

Recommended tips for 1 - 125 ul volumes

Product Number	Description	Max Vol	Tips / Strip	Strips / Rack	Racks / Case
125-016-EZ-NS	Non-Sterile	125 ul	16	12	20
125-016-EZ-S	Sterile	125 ul	16	12	20

Recommended tips for 0.5 - 15 ul volumes

Product Number	Description	Max Vol	Tips / Strip	Strips / Rack	Racks / Case
015-016-EZ-NS	Non-Sterile	15 ul	16	12	20
015-016-EZ-S	Sterile	15 ul	16	12	20

Recommended tips for 0.5 - 50 ul volumes

Product Number	Description	Max Vol	Tips / Strip	Strips / Rack	Racks / Case
050-016-EZ-NS	Non-Sterile	50 ul	16	12	20
050-016-EZ-S	Sterile	50 ul	16	12	20